

# Devels Horse - Devil's Horse

## Other Propped Smithwick Lures



**JBF-100 Jingle Bob**  
4", 3/8 oz ... 1972



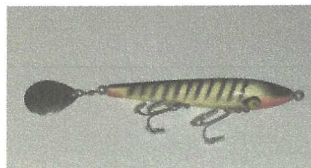
**F-200 Devels/Devil's Horse**  
4 1/4", 1/2 oz ... 1951 - 1990's



**S-200 Devil's Horse Sinker**  
4 1/4", 1/2 oz . perhaps mid 1960's



**F-200 Devels Horse Weedless**  
4 1/4", 1/2 oz ... unknown



**JBF-200 Jingle Bob**  
4 1/4", 1/2 oz... 1972



**IBF-200 Jingle Jumper**  
4 1/4", 1/2 oz ... 1972



**F-400 King Snipe - Old**  
3" ... 1949 - 1955



**F-400 King Snipe**  
3".... 1956 - 1983



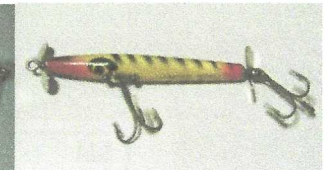
**A-600 3/16 oz Prancer**  
2 3/4", 1/4 oz ... 1961 - 1970's



**F-600 Prancer**  
3 1/4", 1/4 oz ... 1956-1990's



**F-700 Dancer**  
3 1/8", 1/4 oz ... 1953-1990's



**S-700 Dancer Sinker**  
3 1/4", 3/16 oz.. 1956 - ?



**S-700 Dancer Sinker**  
3 1/8", 1/3 oz ... 1953-1962



**JBC-1000 Jingle Bob**  
2 3/4", 1/4 oz ... 1972



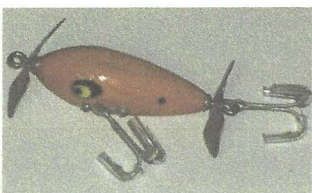
**F-700 Dancer Weedless**  
3 1/8", 1/3 oz ... unknown



**F-300 Devil's Horse**  
5 1/2", 5/8 oz . pre 1072-1990's



**A-900 Buck N Bawl/Scooter**  
2", 1/4 oz ... 1977-1990's



**A-1100 Buck N Bawl Jr.**  
2", 1/4 oz ... 1963 - 1990's



**F-1100 Buck N Bawl**  
2 7/8", 3/8 oz ... 1953-1990's



**S-300 Race Horse**  
2", 1/4 oz ... 1961-1970's

# Devels Horse - Devil's Horse

## Other Propped Smithwick Lures

-continued-

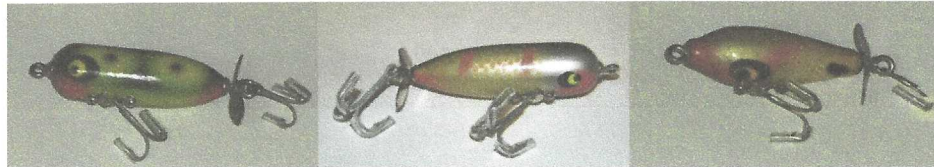


**A-900 Scooter**  
2", 1/3 oz ... 1953-1963

**B-900 Ma Scooter**  
3 3/4", 1/4 oz ... 1953-1990's

**C-900 Pa Scooter**  
4 1/4", 1/2 oz ... 1953-1990's

**S-300 Jack Sprat**  
2", 1 3/4" ... 1951-1958



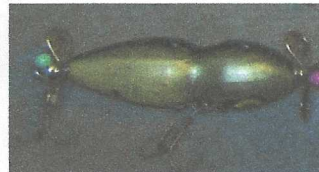
**T-100 Horse Fly**  
1/4 oz ... 1985-1990's

**T-100 Horse Fly**  
3/8 oz ... 1985-1990's

**F-500 Horse Fly**  
1 3/4" ... 1956-mid 1980's



**My Pet Version 2**  
pre - 1955



**Toostie Bug version 3**  
unknown